



**GENERAL FUND RECEIPT ACCOUNT (GFR) GUIDE: SCENARIO 4: NON-CUSTODIAL
STATEMENT COLLECTIONS: COLLECTION OF RECEIVABLES FROM CANCELED AUTHORITY**

EFFECTIVE FISCAL YEAR 2021

PREPARED BY:

**GENERAL LEDGER AND ADVISORY BRANCH
FISCAL ACCOUNTING OPERATIONS
BUREAU OF THE FISCAL SERVICE
U.S. DEPARTMENT OF THE TREASURY**

Version Number	Date	Description of Change	Effective USSGL TFM
1.0	08/2007	Original	TFM Bulletin No. 2018-04
2.0	12/2020	Added General Fund of the U.S. Government Transactions, Updated Financial Statements	

GENERAL FUND RECEIPT (GFR) ACCOUNT GUIDE: SCENARIO 4: NON-CUSTODIAL STATEMENT COLLECTIONS: COLLECTION OF RECEIVABLES FROM CANCELED AUTHORITY Effective Fiscal 2021

Background

Definition of a General Fund Receipt (GFR) Account

The Government Accountability Office (GAO) defines a GFR Account as: “A receipt account credited with all collections that are not earmarked by law for another account for a specific purpose. These collections are presented in the President’s budget as either governmental (budget) receipts or offsetting receipts. These include taxes, customs duties, and miscellaneous receipts.” (Government Accountability Office, [A Glossary of Terms Used in the Federal Budget Process, September 2005, GAO-05-734SP](#))

Purpose

This guidance proposes accounting and reporting guidance for various collections classified in GFR accounts. The following scenarios illustrate accounting transactions and reporting for specific types of collections. The focus of this guidance is on the GFR account activity. Related transactions illustrated in the scenarios such as credit reform activities are covered in more detail in the other case studies. Refer to those case studies for questions not specifically related to GFR activity.

Federal Account Symbols (FAS), Treasury Account Symbols (TAS), and Collections

The Federal Account Symbols and Titles (FAST) Book, published by Treasury, lists all FAS available for Federal agency use. A collection can be classified to any of the listed accounts. To classify a receipt, append your agency’s two digit department code to the FAS. This combination of department code and FAS creates TAS. For example, collections for work performed in accordance with Economy Act can be deposited into any type of expenditure account. On the other hand, National Park Service fees are designated by law to be deposited to a special fund receipt account. Similarly, collections for the National Endowment for the Arts Gift Fund are designated by law to be deposited to a trust fund receipt account. Amounts collected in the course of business by the U.S. Postal Service are, by law, deposited to a revolving fund. Amounts not belonging to the Government are, by law, classified to deposit fund accounts. As you can see, a specific law determines how the collections in the preceding examples are classified in a TAS.

Absent specific legislation, collections should be classified to a **General Fund Receipt TAS**. Title 31, United States Code (USC), chapter 33, section 3302(b) establishes this concept by stating: “Except as provided in section 3718 (b) of this title, an official or agent of the Government receiving money for the Government from any source shall deposit the money in the Treasury as soon as practicable without deduction for any change or claim.” Also, Title 31, USC, chapter 33, section 3302(e) states that “an official or

**GENERAL FUND RECEIPT (GFR) ACCOUNT GUIDE: SCENARIO 4: NON-CUSTODIAL
STATEMENT COLLECTIONS: COLLECTION OF RECEIVABLES FROM CANCELED AUTHORITY
Effective Fiscal 2021**

agent of the Government having custody or possession of public money shall keep an accurate entry of each amount of public money received, transferred, and paid.”

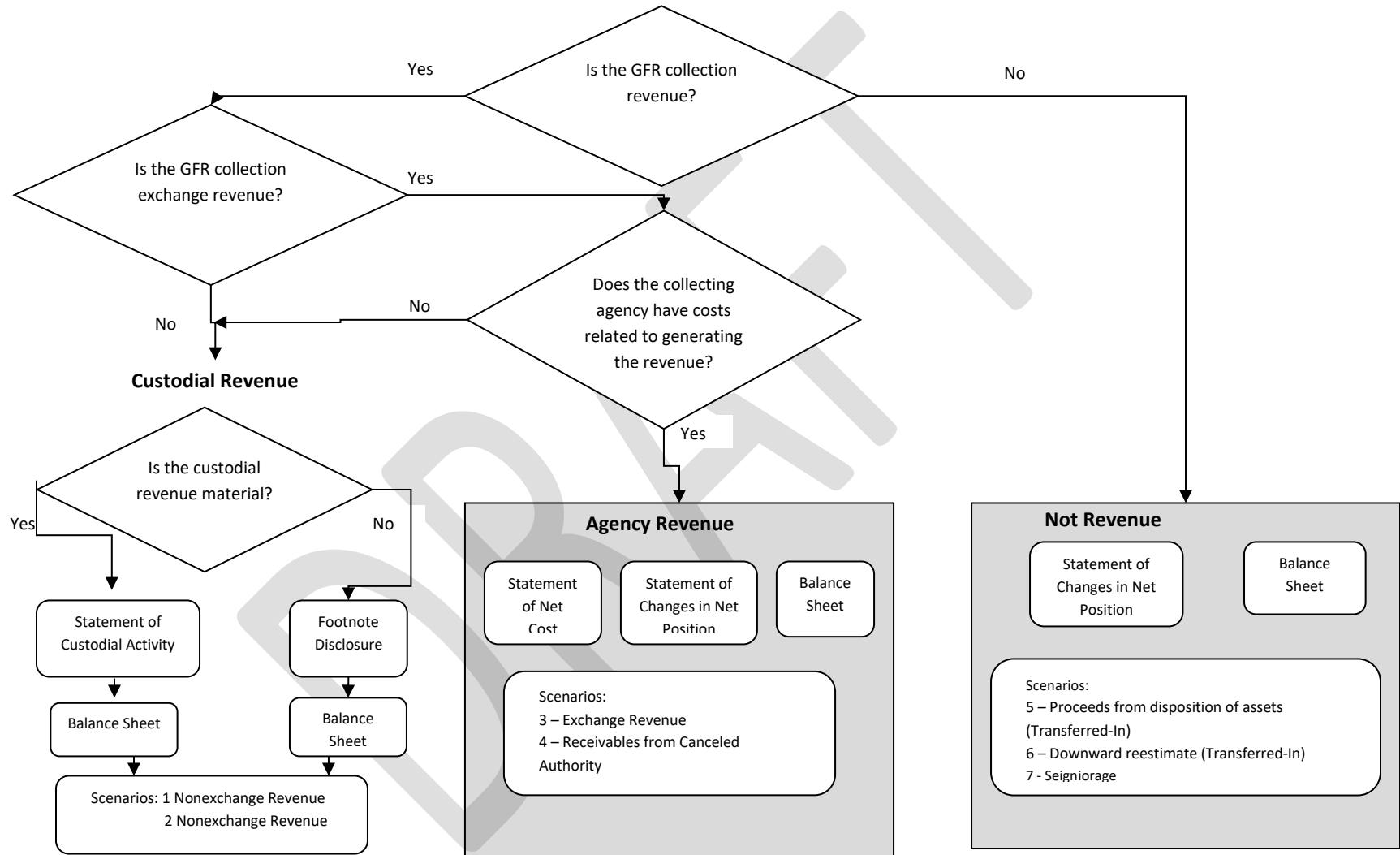
GFR Account Reporting Responsibility

Within each GFR account category listed in the FAST Book there are unique FAS to identify specific activity. After selecting the proper TAS, the reporting entity should append its 3-digit agency identifier code to the beginning of the TAS for classifying the receipt to Treasury. A collecting entity typically reports all GFR TAS beginning with its 3-digit agency identifier code within its entity financial statements.

DRAFT

**GENERAL FUND RECEIPT (GFR) ACCOUNT GUIDE: SCENARIO 4: NON-CUSTODIAL
STATEMENT COLLECTIONS: COLLECTION OF RECEIVABLES FROM CANCELED AUTHORITY
Effective Fiscal 2021**

FLOWCHART - GFR COLLECTIONS TO COLLECTING AGENCY'S FINANCIAL STATEMENTS



**GENERAL FUND RECEIPT (GFR) ACCOUNT GUIDE: SCENARIO 4: NON-CUSTODIAL
STATEMENT COLLECTIONS: COLLECTION OF RECEIVABLES FROM CANCELED AUTHORITY
Effective Fiscal 2021**

Listing of USSGL Accounts Used in This Scenario

Account Number	Account Name
Budgetary	
425100	Reimbursements and Other Income Earned - Receivable
465000	Allotments – Expired Authority
Proprietary	
101000	Fund Balance With Treasury
131000	Accounts Receivable
298500	Liability for Non-Entity Assets Not Reported on the Statement of Custodial Activity
331000	Cumulative Results of Operations
590000	Other Revenue
599000	Collections for Others – Statement of Custodial Activity
599300	Offset to Non-Entity Collections - Statement of Changes in Net Position
599400	Offset to Non-Entity Accrued Collections - Statement of Changes in Net Position

**GENERAL FUND RECEIPT (GFR) ACCOUNT GUIDE: SCENARIO 4: NON-CUSTODIAL
STATEMENT COLLECTIONS: COLLECTION OF RECEIVABLES FROM CANCELED AUTHORITY
Effective Fiscal 2021**

Scenario 4: Non-Custodial Statement Collections: Collection of Receivables From Canceled Authority

Canceled Appropriation

Agencies must close appropriation accounts available for obligation during a definite period on September 30th of the fifth fiscal year after the account’s obligational availability ends. Cancel any remaining balances (whether obligated or unobligated) in the account.

Beginning Trial Balance – Expired Account which is Canceling

Account	Description	Expired Account which is Canceling	
		Debit	Credit
<u>Budgetary</u>			
425100	Reimbursements and Other Income Earned - Receivable	120	-
465000	Allotments – Expired Authority	-	120
Total		120	120
<u>Proprietary</u>			
131000 (F)	Accounts Receivable	120	-
331000	Cumulative Results of Operations	-	120
Total		120	120

**GENERAL FUND RECEIPT (GFR) ACCOUNT GUIDE: SCENARIO 4: NON-CUSTODIAL
STATEMENT COLLECTIONS: COLLECTION OF RECEIVABLES FROM CANCELED AUTHORITY
Effective Fiscal 2021**

Year 6 (September 30 of 5th expired year)

1. To record the cancellation of a receivable and reestablish cancelled receivable in the General Fund Receipt Account.							
Canceling Account	Debit	Credit	TC	GFR Account	Debit	Credit	TC
<u>Budgetary Entry</u> 465000 Allotments – Expired Authority 425100 Reimbursements And Other Income Earned - Receivable <u>Proprietary Entry</u> 590000 (F) Other Revenue (RC 24) ¹ 131000 (F) Accounts Receivable (RC 22)	120	120	F144 ²	<u>Budgetary Entry</u> None <u>Proprietary Entry</u> 131000 (F) Accounts Receivable (RC 22) 590000 (F) Other Revenue (RC 24)	120	120	C420
General Fund of the U.S. Government (099)							
<u>Budgetary Entry</u> None <u>Proprietary Entry</u> None				<u>Budgetary Entry</u> None <u>Proprietary Entry</u> None			

¹ RC – Reciprocal Category is shown for Intragovernmental Elimination Analysis (not included in GTAS upload)

² Note the entries for recording a canceled receivable is considered an adjusting entry.

**GENERAL FUND RECEIPT (GFR) ACCOUNT GUIDE: SCENARIO 4: NON-CUSTODIAL
STATEMENT COLLECTIONS: COLLECTION OF RECEIVABLES FROM CANCELED AUTHORITY
Effective Fiscal 2021**

Also Post:

2. To record offset for the amount accrued in a General Fund receipt account and to establish a liability for non-entity assets that are not reported on the Statement of Custodial Activity or on the custodial footnote.							
Canceling Account	Debit	Credit	TC	GFR Account	Debit	Credit	TC
<u>Budgetary Entry</u> None <u>Proprietary Entry</u> None				<u>Budgetary Entry</u> None <u>Proprietary Entry</u> 599400 (G) ³ Offset to Non-Entity Accrued Collections – Statement of Changes in Net Position (RC 48) 298500 (G) Liability For Non- Entity Assets Not Reported on The Statement of Custodial Activity (RC 46)	120	120	C405
General Fund of the U.S. Government (099)							
<u>Budgetary Entry</u> None <u>Proprietary Entry</u> None				<u>Budgetary Entry</u> None <u>Proprietary Entry</u> 198000 (F) Asset For Agency’s Custodial and Non-Entity Liabilities – General Fund of the U.S. Government (RC 46) ⁴ 571200 (F) Accrual of Agency Amount to be Collected Custodial and Non-Entity – General Fund of the U.S. Government (RC 48)	120	120	

³ The Federal/Non-Federal attribute domain value of “G” will always have trading partner 099 agency identifier.

⁴ The Trading Partner is Department of the Treasury (020).

**GENERAL FUND RECEIPT (GFR) ACCOUNT GUIDE: SCENARIO 4: NON-CUSTODIAL
STATEMENT COLLECTIONS: COLLECTION OF RECEIVABLES FROM CANCELED AUTHORITY
Effective Fiscal 2021**

Year 6 – Preclosing Adjusted Trial Balance

Account	Description	Canceling Account		GFR Account	
		Debit	Credit	Debit	Credit
<u>Budgetary</u>					
None	None	-	-	-	-
		-	-	-	-
Total		-	-	-	-
		-	-		
<u>Proprietary</u>					
131000 (F)	Accounts Receivable	-	-	120	-
298500 (G)	Liability for Non-Entity Assets Not Reported on the Statement of Custodial Activity	-	-	-	120
331000	Cumulative Results of Operations	-	120	-	-
590000 (F)	Other Revenue	120			120
599400 (G)	Offset to Non-Entity Accrued Collection – Statement of Changes in Net Position	-	-	120	-
Total		120	120	240	240

**GENERAL FUND RECEIPT (GFR) ACCOUNT GUIDE: SCENARIO 4: NON-CUSTODIAL
STATEMENT COLLECTIONS: COLLECTION OF RECEIVABLES FROM CANCELED AUTHORITY
Effective Fiscal 2021**

Financial Statements:

CONSOLIDATED BALANCE SHEET AS OF SEPTEMBER 30, YEAR 6		
Line No.		
	Assets (Note 2)	
	Intra-governmental	
3.	Accounts receivable, net (Note 6) (131000E)	120
6.	Total Intra-governmental	120
16.	Total assets	120
	Liabilities: (Note 13)	
	Intra-governmental	
22	Other Liabilities (Notes 15 and 17)	
22.4	Liability to the General Fund of the U.S. Government for custodial and other non-entity assets (Note 17) (298500E)	120
23.	Total Intra-governmental	120
34.	Total liabilities	120
35.	Commitments and Contingencies (Note 19)	
	Net position:	
37.2	Cumulative results of operations – Funds other than those from Dedicated Collections (331000B, 590000E, 599400E)	-
38.	Total net position	-
39.	Total liabilities and net position	120

**GENERAL FUND RECEIPT (GFR) ACCOUNT GUIDE: SCENARIO 4: NON-CUSTODIAL
STATEMENT COLLECTIONS: COLLECTION OF RECEIVABLES FROM CANCELED AUTHORITY
Effective Fiscal 2021**

CONSOLIDATED STATEMENT OF CHANGES IN NET POSITION FOR THE YEAR ENDED SEPTEMBER 30, YEAR 6			
Line No.		All Other Funds	Consolidated
	Cumulative Results from Operations:		
10.	Beginning Balances (331000B)	120	120
12.	Beginning balances, as adjusted	120	120
	Budgetary Financing Sources:		
15.	Nonexchange revenue (590000E)	-	-
	Other Financing Sources (Nonexchange):		
22.	Other (+/-) (599400E)	(120)	(120)
23.	Total Financing Sources	(120)	(120)
24.	Net Cost of Operations (+/-)	-	-
25.	Net Change	(120)	(120)
26.	Cumulative Results of Operations	-	-
27.	Net Position	-	-

**GENERAL FUND RECEIPT (GFR) ACCOUNT GUIDE: SCENARIO 4: NON-CUSTODIAL
STATEMENT COLLECTIONS: COLLECTION OF RECEIVABLES FROM CANCELED AUTHORITY
Effective Fiscal 2021**

SF 133 AND SCHEDULE P: REPORT ON BUDGET EXECUTION AND BUDGETARY RESOURCES AND BUDGET PROGRAM AND FINANCING SCHEDULE FOR THE YEAR ENDED SEPTEMBER 30, YEAR 6			
Line No.		SF 133	Schedule P
	BUDGETARY RESOURCES		
	Unobligated balance:		
1000	Unobligated balance brought forward, Oct 1 (425100B)	120	120
1070	Unobligated balance (total)	120	120
1080	Expired unobligated balance brought forward, Oct 1	120	-
1099	Expired unobligated balance (total)	120	-
	Budget authority:		
	Status of budgetary resources:		
	Spending authority from offsetting collections:		
	Discretionary:		
1701	Change in uncollected payments, Federal sources (+ or-) (425100B, 425100E)	(120)	(120)
1750	Spending authority from offsetting collections, discretionary (total)	(120)	(120)
1900	Budget authority (total)	(120)	(120)
1910	Total budgetary resources	-	-
1930	Total budgetary resources available	-	-
	STATUS OF BUDGETARY RESOURCES		
	New obligations and upward adjustments:		
	Reimbursable:		
2190	New obligations and upward adjustments (total)	-	-
	Unobligated balance:		
	Apportioned, unexpired accounts:		
2413	Expired unobligated balance: end of year (465000E)	-	-
2490	Unobligated balance, end of year (total)	-	-
2500	Total budgetary resources	-	-

**GENERAL FUND RECEIPT (GFR) ACCOUNT GUIDE: SCENARIO 4: NON-CUSTODIAL
STATEMENT COLLECTIONS: COLLECTION OF RECEIVABLES FROM CANCELED AUTHORITY
Effective Fiscal 2021**

SF 133 AND SCHEDULE P: REPORT ON BUDGET EXECUTION AND BUDGETARY RESOURCES AND BUDGET PROGRAM AND FINANCING SCHEDULE AS OF SEPTEMBER 30, YEAR 6			
Line No.		SF 133	Schedule P
	Memorandum (non-add) entries:		
2501	Subject to apportionment unobligated balance, end of year (465000E)	-	-
	CHANGE IN OBLIGATED BALANCE		
	Unpaid obligations:		
3060	Uncollected pymts, Fed sources, brought forward, Oct 1 (-) (425100B)	(120)	(120)
3061	Adjustments to uncollected pymts, Fed sources, brought forward, Oct 1 (+ or -) (425100E)	120	120
	Memorandum (non-add) entries:		
3100	Obligated balance, start of year (+ or -)	-	-
3200	Obligated balance, end of year (+ or -)	-	-
	BUDGET AUTHORITY AND OUTLAYS, NET		
	Discretionary:		
	Gross budget authority and outlays:		
4000	Budget authority, gross	(120)	(120)
	Outlays, gross		
4020	Outlays, gross (total)	-	-
4051	Change in uncollected pymts, Fed sources, expired accounts (+ or -) (425100B, 425100E)	120	120
4060	Additional offsets against budget authority only (total)	120	-
4070	Budget authority, net (discretionary)	-	(120)
4080	Outlays, net (discretionary)	-	-
	Budget authority and outlays, net (total)		
4141	Change in uncollected pymts, Fed sources, expired account (+ or -) (425100B, 425100E)	120	-
4150	Additional offsets against budget authority only (total)	120	-
4180	Budget authority, net (total)	-	-
4190	Outlays, net (total)	-	-

**GENERAL FUND RECEIPT (GFR) ACCOUNT GUIDE: SCENARIO 4: NON-CUSTODIAL
STATEMENT COLLECTIONS: COLLECTION OF RECEIVABLES FROM CANCELED AUTHORITY
Effective Fiscal 2021**

Reclassified Financial Statements:

Note: Effective FY 2021, the Reclassified Balance Sheet is the same as the Balance Sheet. Therefore, the Reclassified Balance Sheet is not presented in this scenario.

RECLASSIFIED STATEMENT OF OPERATIONS AND CHANGES IN NET POSITION FOR THE YEAR ENDED SEPTEMBER 30, YEAR 6			
Line No.		All Other Funds	Consolidated
1	Net position, beginning of period (331000B)	120	120
4	Net position, beginning of period - adjusted	120	120
6	Federal non-exchange revenue:		
6.7	Accrual of Collections Yet to be Transferred to a TAS Other Than the General Fund of the U.S. Government – Nonexchange (RC 16) (599400E)	120	120
6.9	Total federal non-exchange revenue	(120)	(120)
9	Net cost of operations (+/-)	-	-
10	Net position, end of period	-	-

**GENERAL FUND RECEIPT (GFR) ACCOUNT GUIDE: SCENARIO 4: NON-CUSTODIAL
STATEMENT COLLECTIONS: COLLECTION OF RECEIVABLES FROM CANCELED AUTHORITY
Effective Fiscal 2021**

Closing Entries:

1. To record the closing of revenue, expense, and other financing source accounts to cumulative results of operations.

Canceling Account	Debit	Credit	TC	GFR Account	Debit	Credit
<u>Budgetary Entry</u> None				<u>Budgetary Entry</u> None		
<u>Proprietary Entry</u> 331000 Cumulative Results of Operations 590000 (F) Other Revenue	120	120	F336	<u>Proprietary Entry</u> 331000 Cumulative Results of Operations 599400 (G) Offset to Non-Entity Accrued Collection – Statement of Changes in Net Position (RC 48) 590000 (F) Other Revenue 331000 Cumulative Results of Operations	120	120 120
General Fund of the U.S. Government (099)						
				<u>Budgetary Entry</u> None		
				<u>Proprietary Entry</u> 571200 (F) Accrual of Agency Amount – To Be Collected – Custodial and Non-Entity – General Fund of the U.S. Government (RC 48) 331000 Cumulative Results of Operations	120	120

**GENERAL FUND RECEIPT (GFR) ACCOUNT GUIDE: SCENARIO 4: NON-CUSTODIAL
STATEMENT COLLECTIONS: COLLECTION OF RECEIVABLES FROM CANCELED AUTHORITY
Effective Fiscal 2021**

Year 6 (September 30 of 5th expired year) – Post-Closing Trial Balance

Account	Description	Canceling Account		GFR Account	
		Debit	Credit	Debit	Credit
<u>Budgetary</u>					
None	None	-	-	-	-
		-	-	-	-
Total		-	-	-	-
		-	-		
<u>Proprietary</u>					
131000 (F)	Accounts Receivable	-	-	120	-
298500 (G)	Liability for Non-Entity Assets Not Reported on the Statement of Custodial Activity	-	-	-	120
Total		-	-	120	120

Year 7 – 1st Quarter

**GENERAL FUND RECEIPT (GFR) ACCOUNT GUIDE: SCENARIO 4: NON-CUSTODIAL
STATEMENT COLLECTIONS: COLLECTION OF RECEIVABLES FROM CANCELED AUTHORITY
Effective Fiscal 2021**

1. To record the collection of receivables of custodial revenue from a non-Federal source that is deposited to a miscellaneous receipt account.							
Canceled Account	Debit	Credit	TC	GFR Account	Debit	Credit	TC
<u>Budgetary Entry</u> None				<u>Budgetary Entry</u> None			
<u>Proprietary Entry</u> None				<u>Proprietary Entry</u> 101000 (G) Fund Balance With Treasury ⁵ (RC 40) 131000 (N) Accounts Receivable	50	50	C143
General Fund of the U.S. Government (099)							
<u>Budgetary Entry</u> None				<u>Budgetary Entry</u> None			
<u>Proprietary Entry</u> None				<u>Proprietary Entry</u> 198000 (F) Assets for Agency's Custodial and Non-Entity Liability 201000 (F) Liability for Fund Balance With Treasury (RC 40)	50	50	

⁵ Although USSGL account 101000 is deposited into the General Fund of the U.S. Government, the collecting agency still has to carry the balances of USSGL accounts 101000 and 298500 on its quarterly Balance Sheet. Treasury's CARS system does not sweep USSGL account 101000 until the year end. The agency should make a note of this as a reconciling item.

**GENERAL FUND RECEIPT (GFR) ACCOUNT GUIDE: SCENARIO 4: NON-CUSTODIAL
STATEMENT COLLECTIONS: COLLECTION OF RECEIVABLES FROM CANCELED AUTHORITY
Effective Fiscal 2021**

Also Post:

2. To reclassify the offset from the revenue or other financing sources accrued to revenue or other financing sources collected for others that is not reported on the Statement of Custodial Activity or on the custodial footnote.							
Canceled Account	Debit	Credit	TC	GFR Account	Debit	Credit	TC
<u>Budgetary Entry</u> None				<u>Budgetary Entry</u> None			
<u>Proprietary Entry</u> None				<u>Proprietary Entry</u> 599300 (G) Offset to Non-Entity Collections – Statement of Changes in Net Position (RC 44) 599400 (G) Offset to Non-Entity Accrued Collections – Statement of Changes in Net Position (RC 48)	50	50	D585
General Fund of the U.S. Government (099)							
<u>Budgetary Entry</u> None				<u>Budgetary Entry</u> None			
<u>Proprietary Entry</u> None				<u>Proprietary Entry</u> 571200 (F) Accrual of Agency Amount – To Be Collected – Custodial and Non-Entity – General Fund of the U.S. Government (RC 48) 571000 (F) Transfer In Of Agency Unavailable Custodial and Non- Entity Collections (RC 44)	50	50	

**GENERAL FUND RECEIPT (GFR) ACCOUNT GUIDE: SCENARIO 4: NON-CUSTODIAL
STATEMENT COLLECTIONS: COLLECTION OF RECEIVABLES FROM CANCELED AUTHORITY
Effective Fiscal 2021**

Year 7 - Preclosing Trial Balance

Account	Description	GFR Account	
		Debit	Credit
<u>Budgetary</u>			
None			
<u>Proprietary</u>			
101000 (G)	Fund Balance With Treasury	50	-
131000 (N)	Accounts Receivable	70	-
298500 (G)	Liability for Non-Entity Assets Not Reported on the Statement of Custodial Activity	-	120
599300 (G)	Offset to Non-Entity Collections – Statement of Changes in Net Position	50	-
599400 (G)	Offset to Non-Entity Accrued Collections – Statement of Changes in Net Position	-	50
Total		170	170

**GENERAL FUND RECEIPT (GFR) ACCOUNT GUIDE: SCENARIO 4: NON-CUSTODIAL
STATEMENT COLLECTIONS: COLLECTION OF RECEIVABLES FROM CANCELED AUTHORITY
Effective Fiscal 2021**

Financial Statements:

CONSOLIDATED BALANCE SHEET AS OF 1st QUARTER, DECEMBER 31, YEAR 7		
Line No.		
	Assets (Note 2)	
	Intra-governmental	
1.	Fund Balance With Treasury (Note 3) (101000E)	50
3.	Accounts receivable, net (Note 6) (131000E)	70
6.	Total Intra-governmental	120
16.	Total assets	120
	Liabilities: (Note 13)	
	Intra-governmental	
22	Other Liabilities (Notes 15 and 17)	
22.4	Liability to the General Fund of the U.S. Government for custodial and other non-entity assets (Note 17) (298500E)	120
23.	Total Intra-governmental	120
34.	Total liabilities	120
35	Commitments and Contingencies (Note 19)	
	Net Position:	
37.	Total net position – Funds other than those from Dedicated Collections (Combined or Consolidated)	
37.2	Cumulative results of operations – Funds other than those from Dedicated Collections (599300E, 599400E)	-
38.	Total net position	-
39.	Total liabilities and net position	120

**GENERAL FUND RECEIPT (GFR) ACCOUNT GUIDE: SCENARIO 4: NON-CUSTODIAL
STATEMENT COLLECTIONS: COLLECTION OF RECEIVABLES FROM CANCELED AUTHORITY
Effective Fiscal 2021**

Year 7 – 4th Quarter

1. To record the collection of receivables of custodial revenue from a non-Federal source that is deposited to a miscellaneous receipt account.							
Canceled Account	Debit	Credit	TC	GFR Account	Debit	Credit	TC
<u>Budgetary Entry</u> None				<u>Budgetary Entry</u> None			
<u>Proprietary Entry</u> None				<u>Proprietary Entry</u> 101000 (G) Fund Balance With Treasury (RC 40) 131000 (N) Accounts Receivable	70	70	C143
General Fund of the U.S. Government (099)							
<u>Budgetary Entry</u> None				<u>Budgetary Entry</u> None			
<u>Proprietary Entry</u> None				<u>Proprietary Entry</u> 198000 (F) Assets for Agency's Custodial and Non-Entity Liability 201000 (F) Liability for Fund Balance With Treasury (RC 40)	70	70	

**GENERAL FUND RECEIPT (GFR) ACCOUNT GUIDE: SCENARIO 4: NON-CUSTODIAL
STATEMENT COLLECTIONS: COLLECTION OF RECEIVABLES FROM CANCELED AUTHORITY
Effective Fiscal 2021**

Also Post:

2. To reclassify the offset from the revenue or other financing sources accrued to revenue or other financing sources collected for others that is not reported on the Statement of Custodial Activity or on the custodial footnote.							
Canceled Account	Debit	Credit	TC	GFR Account	Debit	Credit	TC
<u>Budgetary Entry</u> None				<u>Budgetary Entry</u> None			
<u>Proprietary Entry</u> None				<u>Proprietary Entry</u> 599300 (G) Offset to Non-Entity Collections – Statement of Changes in Net Position (RC 44) 599400 (G) Offset to Non-Entity Accrued Collections – Statement of Changes in Net Position (RC 48)	70	70	D585
General Fund of the U.S. Government (099)							
<u>Budgetary Entry</u> None				<u>Budgetary Entry</u> None			
<u>Proprietary Entry</u> None				<u>Proprietary Entry</u> 571200 (F) Accrual of Agency Amount – To Be Collected – Custodial and Non-Entity – General Fund of the U.S. Government (RC 48) 571000 (F) Transfer in of Agency Unavailable Custodial and Non- Entity Collections (RC 44)	70	70	

**GENERAL FUND RECEIPT (GFR) ACCOUNT GUIDE: SCENARIO 4: NON-CUSTODIAL
STATEMENT COLLECTIONS: COLLECTION OF RECEIVABLES FROM CANCELED AUTHORITY
Effective Fiscal 2021**

Year 7 – Preclosing Trial Balance

Account	Description	GFR Account	
		Debit	Credit
<u>Budgetary</u>			
None			
<u>Proprietary</u>			
101000 (G)	Fund Balance With Treasury	120	-
298500 (G)	Liability for Non-Entity Assets Not Reported on the Statement of Custodial Activity	-	120
599300 (G)	Offset to Non-Entity Collections – Statement of Changes in Net Position	120	-
599400 (G)	Offset to Non-Entity Accrued Collections – Statement of Changes in Net Position	-	120
Total		240	240

**GENERAL FUND RECEIPT (GFR) ACCOUNT GUIDE: SCENARIO 4: NON-CUSTODIAL
STATEMENT COLLECTIONS: COLLECTION OF RECEIVABLES FROM CANCELED AUTHORITY
Effective Fiscal 2021**

Year 7 – Preclosing Adjusting Entry

1. To record the closing of FBWT collected in a General Fund receipt account at the year end.							
Canceled Account	Debit	Credit	TC	GFR Account	Debit	Credit	TC
<u>Budgetary Entry</u> None				<u>Budgetary Entry</u> None			
<u>Proprietary Entry</u> None				<u>Proprietary Entry</u> 298500 (G) Liability for Non-Entity Assets Not Reported on the Statement of Custodial Activity (RC 46) 101000 (G) Fund Balance With Treasury (RC 40)	120	120	F124
General Fund of the U.S. Government (099)							
<u>Budgetary Entry</u> None				<u>Budgetary Entry</u> None			
<u>Proprietary Entry</u> None				<u>Proprietary Entry</u> 201000 (F) Liability for Fund Balance With Treasury (RC 40) 198000 (F) Asset for Agency’s Custodial and Non-Entity Liabilities General Fund of the U.S. Government (RC 46)	120	120	

**GENERAL FUND RECEIPT (GFR) ACCOUNT GUIDE: SCENARIO 4: NON-CUSTODIAL
STATEMENT COLLECTIONS: COLLECTION OF RECEIVABLES FROM CANCELED AUTHORITY
Effective Fiscal 2021**

Year 7 – Preclosing Adjusted Trial Balance

Account	Description	GFR Account	
		Debit	Credit
<u>Budgetary</u>			
None			
<u>Proprietary</u>			
599300 (G)	Offset to Non-Entity Collections – Statement of Changes in Net Position	120	-
599400 (G)	Offset to Non-Entity Accrued Collections – Statement of Changes in Net Position	-	120
Total		120	120

**GENERAL FUND RECEIPT (GFR) ACCOUNT GUIDE: SCENARIO 4: NON-CUSTODIAL
STATEMENT COLLECTIONS: COLLECTION OF RECEIVABLES FROM CANCELED AUTHORITY
Effective Fiscal 2021**

Closing Entries:

1. To record the closing of revenue, expense, and other financing source accounts to cumulative results of operations.						
Canceled Account	Debit	Credit	TC	GFR Account		
<u>Budgetary Entry</u> None				<u>Budgetary Entry</u> None		
<u>Proprietary Entry</u> None				<u>Proprietary Entry</u> 331000 Cumulative Results of Operations 599300 (G) Offset to Non-Entity Collections – Statement of Changes in Net Position (RC 44)	120	120
				599400 (G) Offset to Non-Entity Accrued Collections – Statement of Changes in Net Position (RC 48) 331000 Cumulative Results of Operations	120	120
General Fund of the U.S. Government (099)						
<u>Budgetary Entry</u> None				<u>Budgetary Entry</u> None		
<u>Proprietary Entry</u> None				<u>Proprietary Entry</u> 571000 (F) Transfer in of Agency Unavailable Custodial and Non-Entity Collections (RC 44) 331000 Cumulative Results of Operations	120	120
				331000 Cumulative Results of Operations 571200 (F) Accrual of Agency Amount – To Be Collected – Custodial and Non- Entity – General Fund of the U.S. Government (RC 48)	120	120

**GENERAL FUND RECEIPT (GFR) ACCOUNT GUIDE: SCENARIO 4: NON-CUSTODIAL
STATEMENT COLLECTIONS: COLLECTION OF RECEIVABLES FROM CANCELED AUTHORITY
Effective Fiscal 2021**

Post-Closing Trial Balance:

Account	Description	GFR Account	
		Debit	Credit
<u>Budgetary</u>			
None			
<u>Proprietary</u>			
None			

DRAFT